



## 10 Abbeydale Road South, Sheffield S17 3LJ

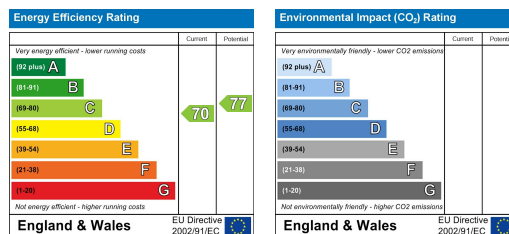
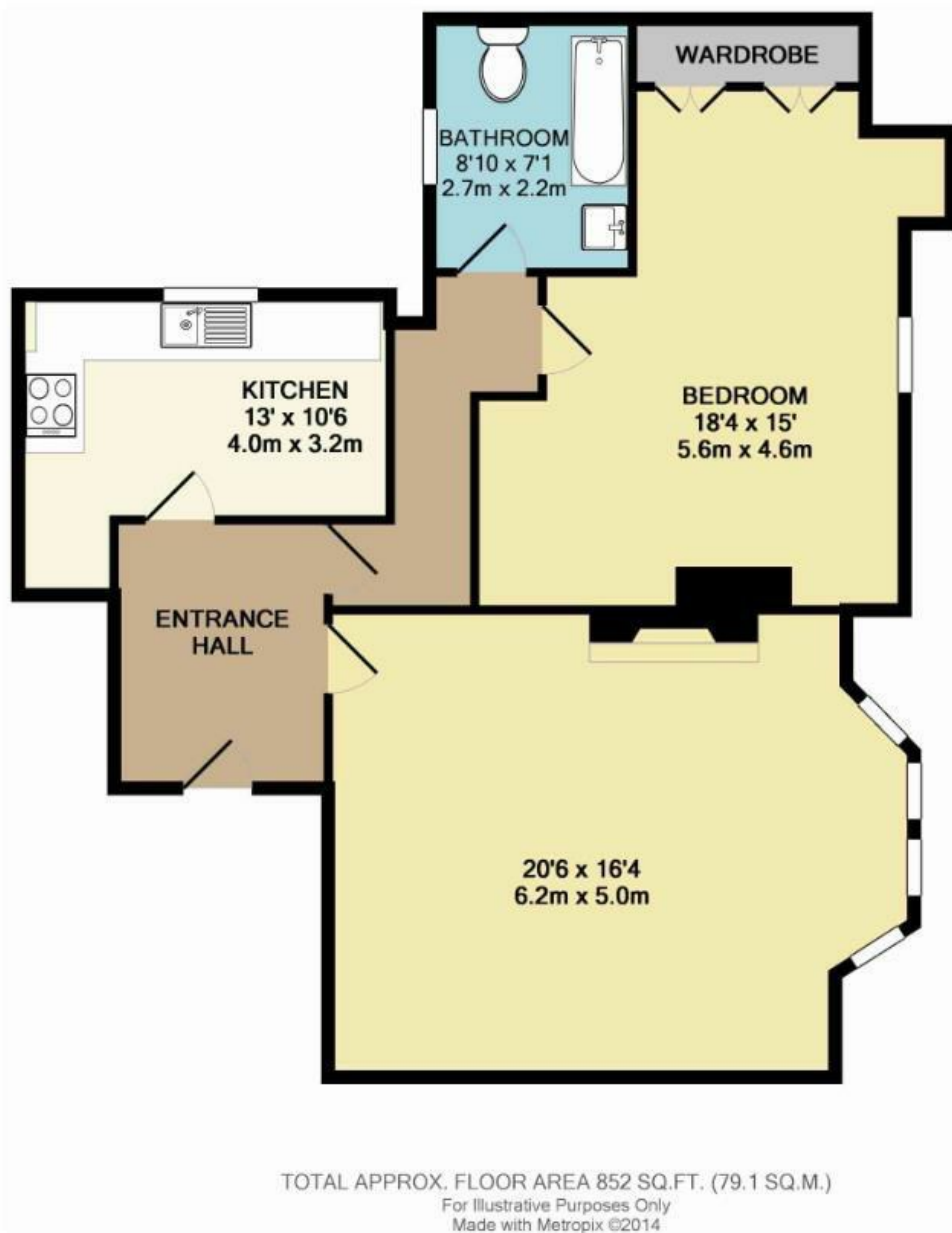
### £995 PCM

A beautifully presented one-bedroom ground floor apartment, set within an exclusive gated development in the highly sought-after area of Dore.

Offered furnished, this stylish home boasts a spacious and light-filled living room, a generously sized double bedroom with fitted wardrobes, and a modern kitchen area complete with integrated appliances, white goods, and a combi boiler. Designed with both comfort and practicality in mind, the apartment provides ample living space in a secure and well-maintained setting.

The development itself benefits from secure gated access, intercom entry to the block, and ample parking for residents. Perfectly positioned in the prestigious Dore area, the property enjoys excellent local facilities, regular transport links into Sheffield city centre, and easy access to the nearby villages of Dore and Totley, with their array of well-established restaurants, bistros, and cafés.

For those who love the outdoors, several local parks are close by, and the breathtaking Peak District National Park can be reached in just 20 minutes, making this apartment an ideal choice for both city living and countryside escapes.



Banner Cross  
Hathersage  
Bakewell  
Matlock  
www.saxtonmee.co.uk

949-951 Ecclesall Road, Sheffield S11 8TN  
3 Bank View, Main Road, Hathersage S32 1BB  
Matlock Street, Bakewell DE45 1EE  
27 Causeway Lane, Matlock, DE4 3AR

T: 0114 268 3241  
T: 01433 650009  
T: 01629 815307  
T: 01629 828250

E: bannercross@saxtonmee.co.uk  
E: hathersage@saxtonmee.co.uk  
E: bakewell@saxtonmee.co.uk  
E: matlock@saxtonmee.co.uk